

## Card Reader User Manual

### MODEL LIST

**UB-6001      4 Slots + USB1.1 Interface**

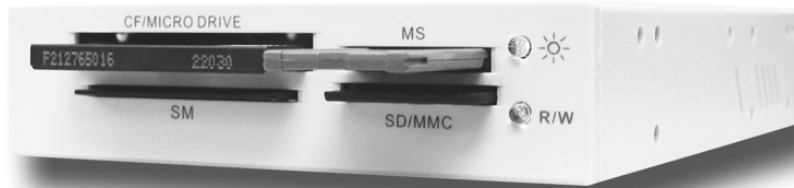
**UB-6002      4 Slots + USB2.0 Interface**

### FEATURE

- Full Compatible USB Specification Version 1.1 / 2.0
- Full speed 12Mbits/sec support for USB1.1
- Full speed 480Mbits/sec support for USB2.0
- Support on Control transfer, one interrupt transfer and two bulk transfer
- Plug & Play installation device
- Support 6 types of flash memory card
  - \* Compact Flash Card (CF)
  - \* Smart Media Card (SM)
  - \* Memory Stick (MS)
  - \* Secure Digital Card (SD)
  - \* Multi-Media Card (MMC)
  - \* IBM Micro Drive
- Indication LED
- Support both Internal / External Cabling
- O/S support to Windows 98SE / NT / ME / 2K / XP and MAC 9.0 and above  
(NOTE : Mac OS 9.0 Supported by Apple default driver Mac OS 8.6 Download supplement driver from [www.apple.com](http://www.apple.com))

### SPECIFICATION

<b>Dimension (mm)</b>	<b>:</b>	<b>130 x 110 x 25 (L x W x H) mm</b>
<b>Weight</b>	<b>:</b>	<b>160G</b>
<b>Temperature</b>	<b>:</b>	<b>Operating            0°C ~ 70°C</b> <b>NON-Operation    -40°C ~ 70°C</b>
<b>Humidity</b>	<b>:</b>	<b>Operating            20% ~ 80%</b> <b>NON-Operation    15% ~ 90%</b>
<b>Display</b>	<b>:</b>	<b>Green for Power</b> <b>Orange for access</b>
<b>Power Supply</b>	<b>:</b>	<b>DC 5V from USB port</b>
<b>Connector Interface</b>	<b>:</b>	<b>USB1.1 / 2.0</b>



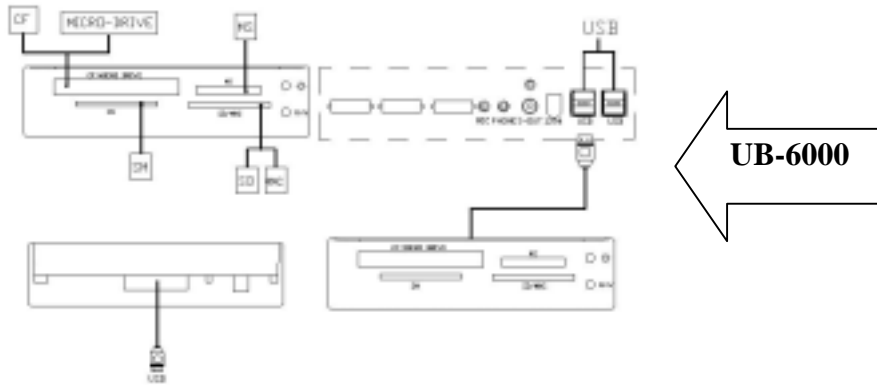
**UB-6000**

## Card Reader User Manual

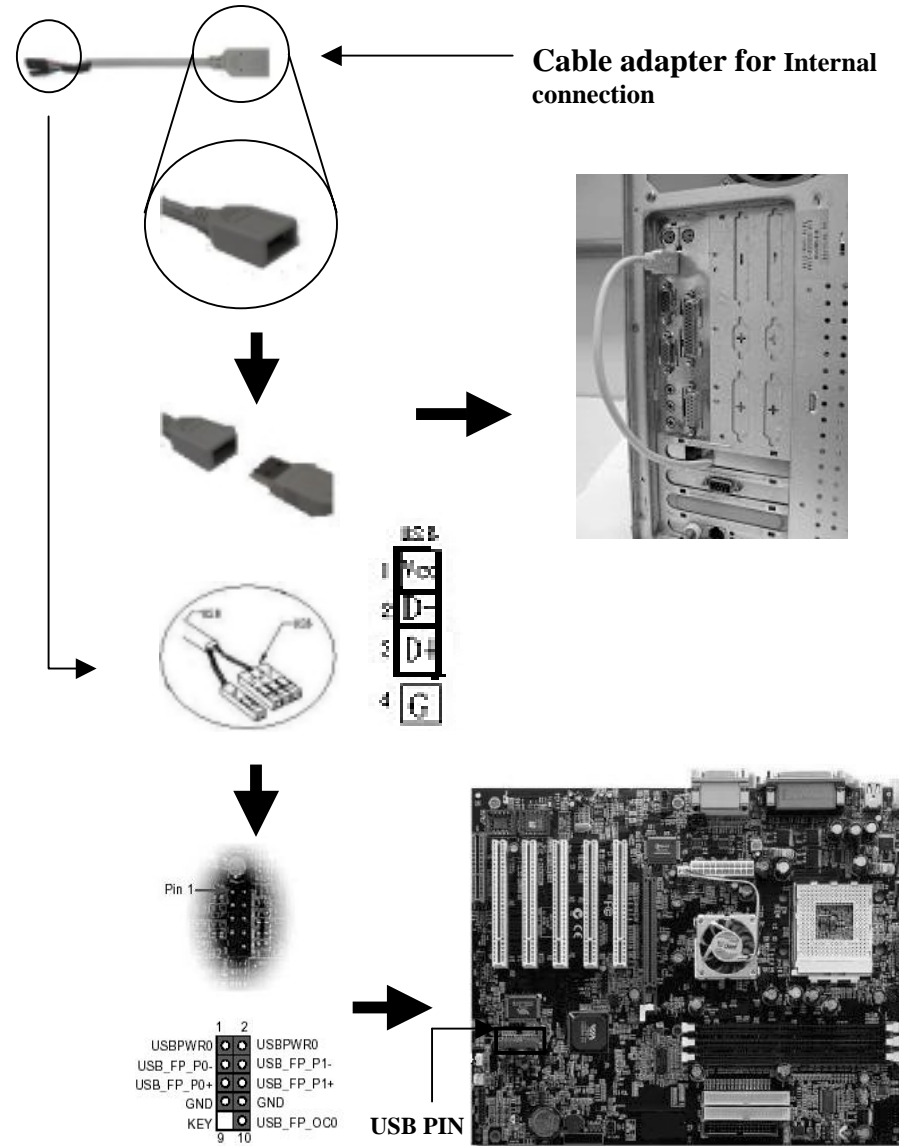
INSTALLATION

I. How to install Card Reader to your PC

- 1 First, power off and move power cord from your computer.
- 2 Find the way to open your PC chassis by proper tools.
- 3 Install Card Reader to one of 3.5" device bay from your PC.
- 4 Tight up Card Reader with attached screws in accessory pack.
- 5 Connect USB Cable to USB pin header of Motherboard
- 6 Replace the PC chassis cover and plug back power cord. Power on then start to install the driver of Card Reader.



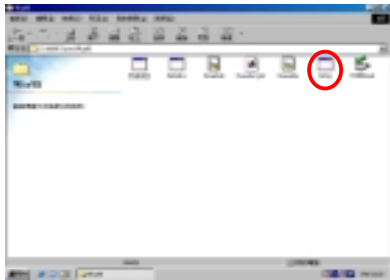
Card Reader User Manual  
II. Connect external USB cable



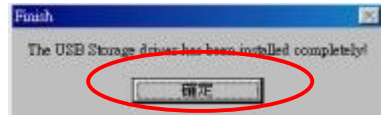
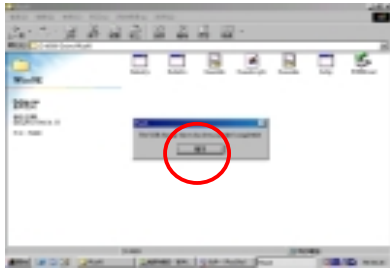
**Note: Every Mother Board manufacturers have own different PIN assignment. Please read and refer to the USER MANUAL before connected**



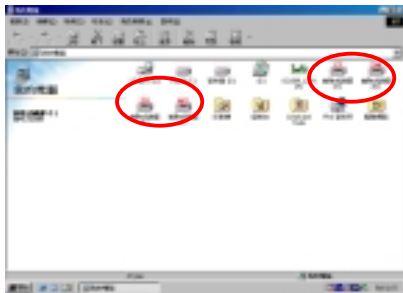
III. Card Reader USB2.0 driver Install Guide For 98SE



1. First step, Please Install the driver Disk in CD-Rom Drive
2. Click "Setup.exe" file from CD

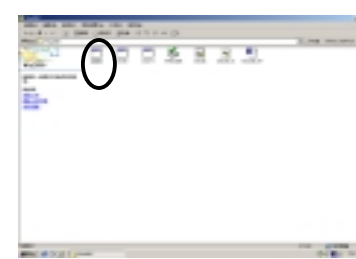


3. Click "YES"
4. After installed completely the driver, Please restart your computer

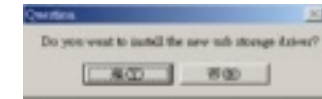
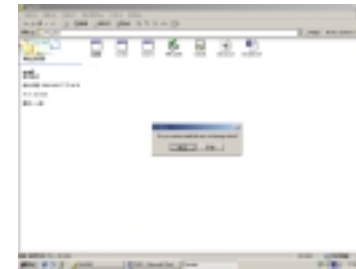


5. Connect USB Cable: You will see 4 swap drives show up and each drive is able to operate individually.
6. You may transfer data on file from port to

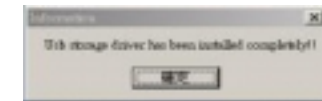
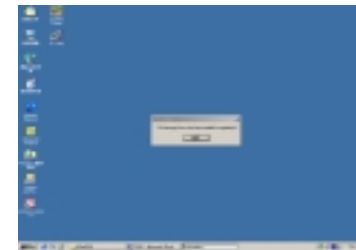
IV. Card Reader USB2.0 driver Install Guide For Win2000



1. First step, Please Install the drive Disk in CD-Rom Drive
2. Click "Install.exe" file from CD



3. Click "YES"

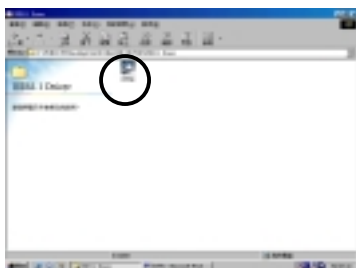


4. Click "YES", and please restart your computer

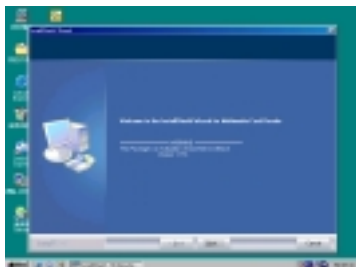


5. After reboot, connect reader to your USB cable to your PC, You will see 4 swap drive show up. Each drive able to operating individually
6. You may transfer data on file from port to port

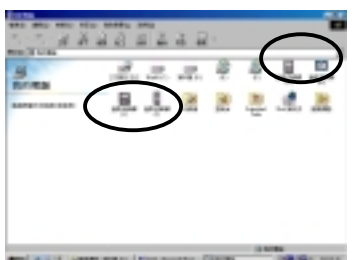
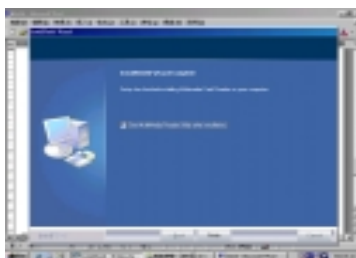
V. Card Reader USB1.1 driver Install Guide For WIN98SE /2000



- 1. First step, Please Install the drive Disk in CD-Rom Drive ( USB1.1 Driver)
- 2. Click “Setup.exe” file from CD
- 3. Click “next”



- 4. Click “Finish” and please restart your computer



- 5. After reboot, connect reader to your USB cable to your PC, You will see 4 swap drive show up. Each drive able to operating individually
- 6. You may transfer data on file from port to port

REMARK

Memory Card SPEC.

Support USB power saving mode

Compact Flash Card Interface

- Fully compatible with Compact Flash Specification Version 1.4
- Fully compatible with PC Card Standard Release 8.0
- Host Transfer Rate for PC Card/Compact Flash: 16.6MB/s (PIO4)
- Fully compatible with the IDE standard interface

Smart Media Card Interface

- Fully compatible with Smart Media? Electrical Specification Version 1.30
- Fully compatible with Smart Media? Physical Format Specification Version 1.30
- Fully compatible with Smart Media? Logical Format Specification Version 1.20
- Support capacity 4/8/16/32/64/128 / 256MB
- Build-in standard Smart Media hardware ECC circuit
- Best performance with hardware sequencer control logic
- Also support to build-in NAND Flash Memory up to 256MB

Memory Stick Interface

- Fully compatible with the Memory Stick Standard Format Specification Version 1.3
- Auto Data CRC generating & checking
- Support capacity 4/8/16/32/64/128 / 256MB

Secure Digital Card/MultiMedia Card Interface

- Fully compatible with MultiMedia Card System Specification 2.2
- Fully compatible with Secure Digital Specification 1.0
- Support capacity4/8/16/32/64/128 / 256MB
- Auto Data CRC generating & checking
- Auto Command/Response CRC generating & checking
- Standard MMC/SPI/SD 4-bit mode interface support
- No any compatible issues with ALL kinds of MMC/SD cards



## **FCC Class B Radio Frequency Interference Statement**

This equipment has been tested and found to comply with the limits for a Class B digital device, pursuant to Part 15 of FCC Rules. These limits are designed to provide reasonable protection against harmful interference in a residential installation. This equipment generates, uses, and can radiate radio frequency energy and, if not installed and used in accordance with the instructions, may cause harmful interference to radio communications. However, there is no guarantee that interference will not occur in a particular installation. If this equipment does cause harmful interference to radio or television reception, which can be determined by turning the equipment off and on, the user is encouraged to try to correct the interference by one or more of the following measures :

1. Reorient or relocate the receiving antenna.
2. Increase the separation between the equipment and receiver.
3. Connect the equipment into an outlet on a circuit different from that to which the receiver is connected.
4. Consult the dealer or an experienced radio/television technician for help.

Notice 1 :

The changes or modifications not expressly approved by the party responsible for compliance could void the user's authority to operate the Equipment.

Notice 2:

Shielded interface cables, if any, must be used in order to comply with the emission limits.